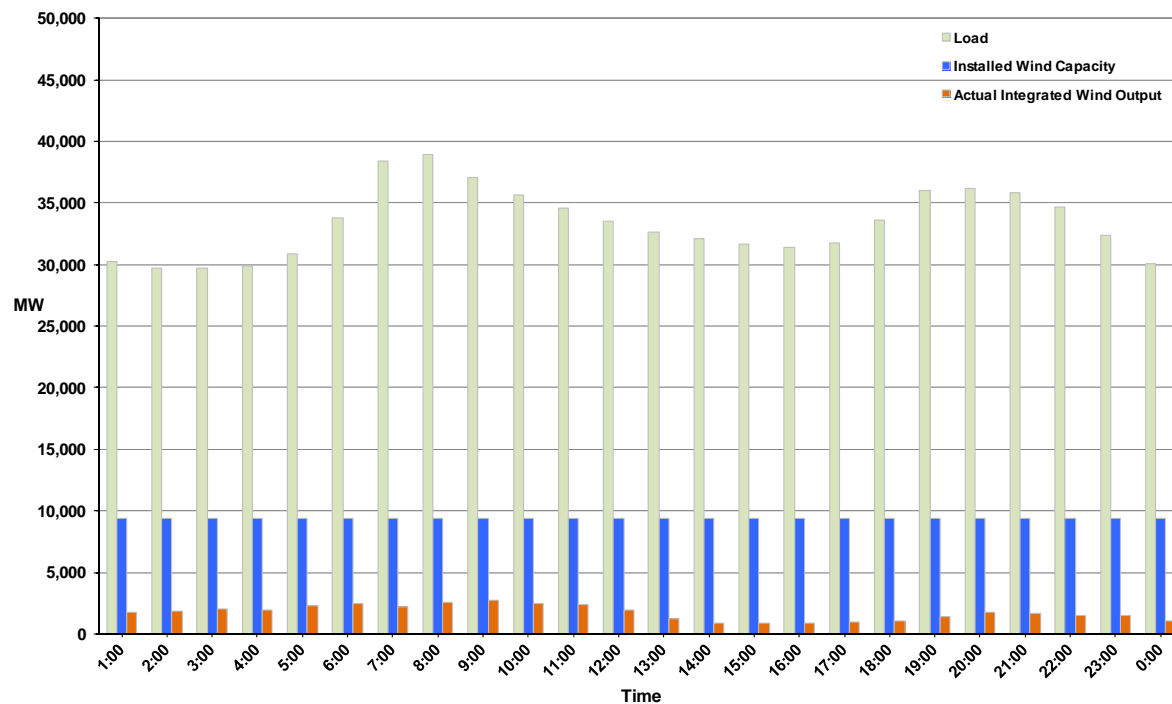




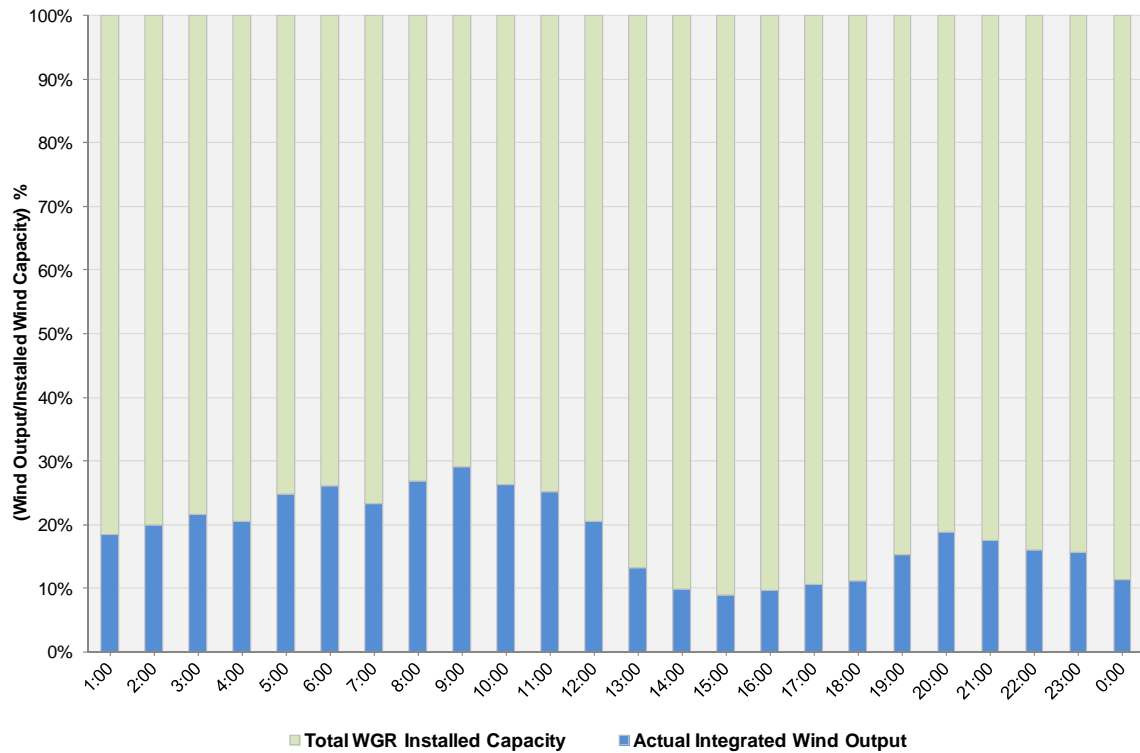
## ERCOT Grid Operations Wind Integration Report: 11/29/11

Peak Load	38,936 MW
Load Peak Hour	08
Wind over Peak	2,541 MW
Wind Record 10/07/11	7,400 MW
Max Wind Value	2,911 MW
Wind Peak Time	08:26
Wind Integration %	7.85%

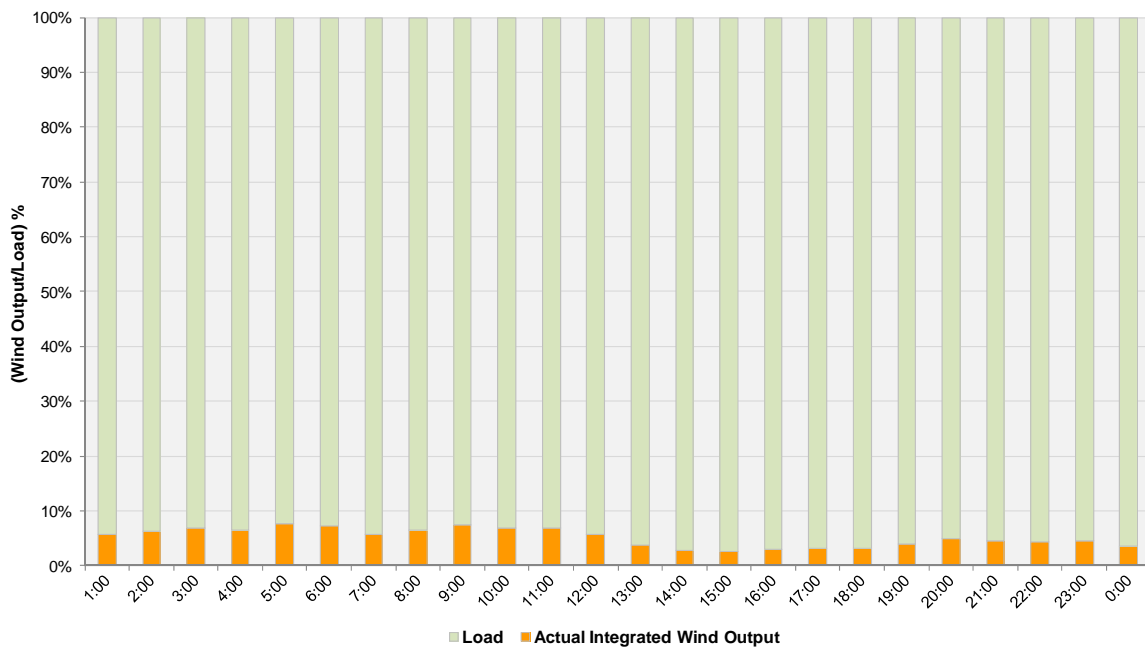
**Hourly Average Actual Load vs. Actual Wind Output  
11-29-2011**



**Actual Wind Output as a Percentage of the Total Installed Wind Capacity**  
**11-29-2011**



**Actual Wind Output as a Percentage of the ERCOT Load**  
**11-29-2011**



ERCOT Load vs. Actual Wind Output 11/22/2011 - 11/29/2011

